

HCP PUMP

Model	80SFU21.5
Series	SF
Frequency	60
Phase / Volt	3 Ø / 230 V
Rated Current	5.8 A
Discharge	80 mm (3")



Motor Data

Input Power—P1	1.95 kW
Rated Power—P2	1.5 kW
Insulation Class	F
Max. Starts Per Hour	10
Rated Speed (rpm)	3440
Start Method	DOL
Ingress Protection Code	IP68
Explosion-Proof	NO

Technology

Impeller Type	Vortex
Mechanical Seal	Double
Lubricating Oil VG32	850 CC
Solid Passage	50 mm (2")
Cooling Type	External cooling

Material

Motor Frame	SUS316 (AISI 316)
Shaft	SUS316 (AISI 316)
Casing	SCS14 (A744 CF-8M)
Impeller	SCS14 (A744 CF-8M)
Mechanical Seal	CA/CE&SiC/SiC
Cable	VCT,SOW,SOOW
Upper and Lower Bearing	6204ZZ,6305ZZ

Liquid

Maximum Ambient Temperature	0~40°C (32~104°F)
Maximum Installation Depth	20m (66ft)
Highest Liquid Temperature	40 °C (104°F)
Liquid Transported	Acid and alkali sewage

Others(Optional)

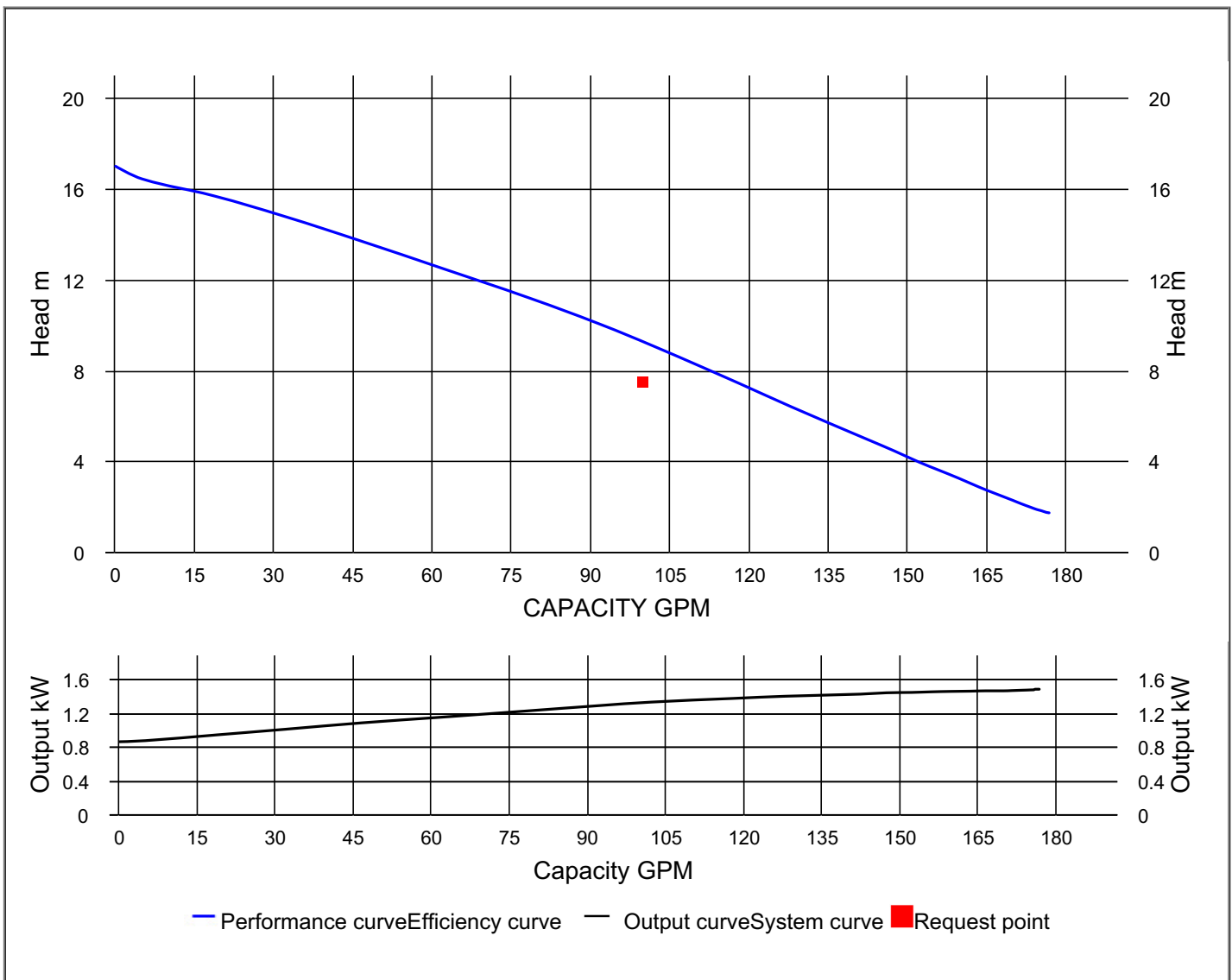
Protection Device	Auto-cut Protector
Moisture Sensor	



HCP PUMP

PUMP PERFORMANCE CURVES

Model	80SFU21.5	File NO.	20240928013412	
Frequency	60 Hz	Ver NO.	202003060911	
Discharge	3" / 80 mm	REFERENCE SPECIFICATION		
Power	2 HP / 1.5 kW	Result	Request point	
Std. Head	8 m	Ref. head	7.5 m	
Std. Capacity	105 GPM	Capacity	100 GPM	
Phase / Volt	3 Ø / 230 V			
Rated Current	5.8 A			
Pole / rpm	2 P / 3440 rpm			
Start Method	DOL			
Insulation Class	F			

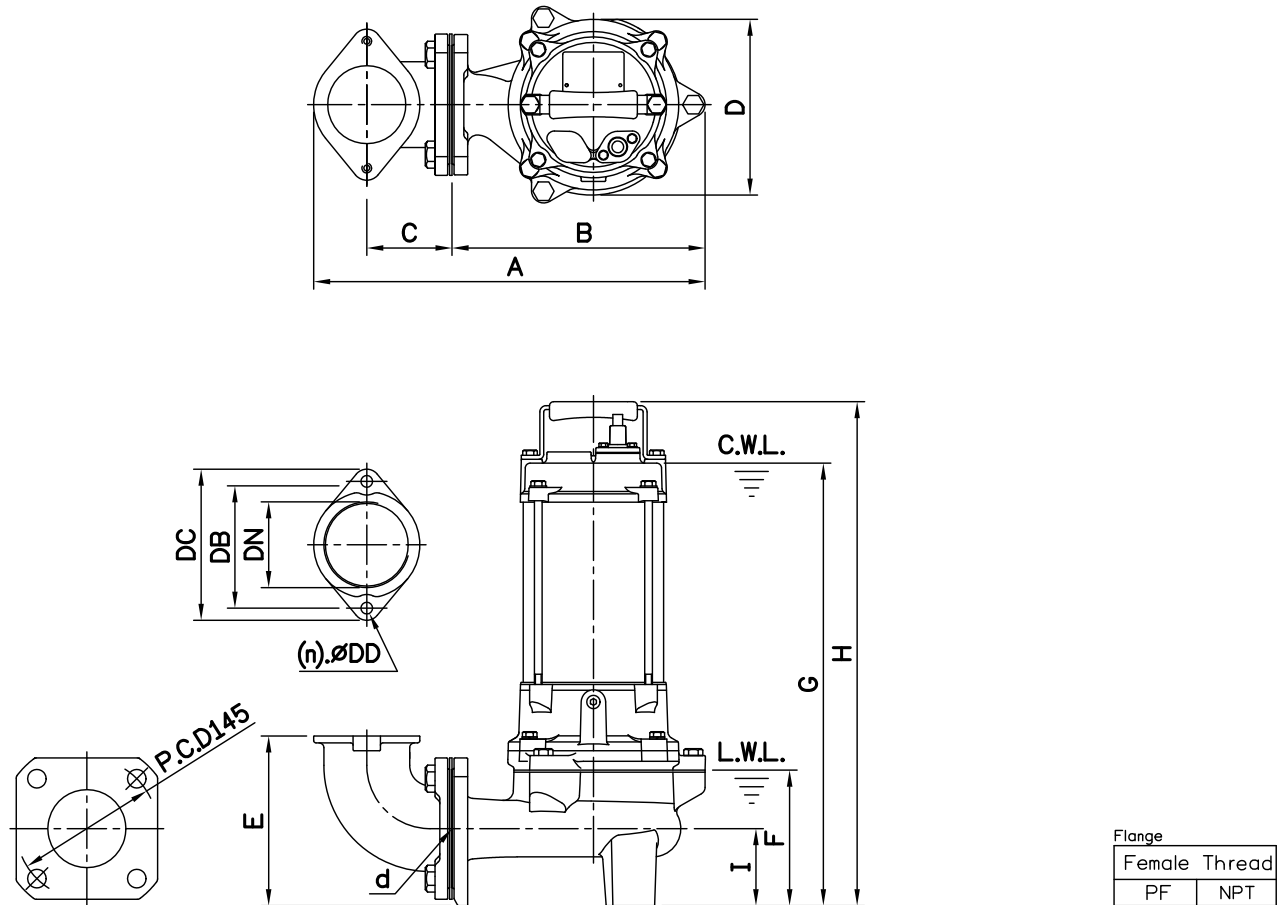


DIMENSIONS

NO: S3SFU222032-00

MODEL: 80SFU21.5 / 22.2

60Hz 1Ø / 3Ø



Dimensions—mm

Weight:kg

Model	d	A	B	C	D	E	F	G	H	I	WT1	Elbow (Flange)Set	DN	DB	DC	DD	(n)QTY	WT2
80SFU21.5 1Ø	80	402	260	88	202	174	139	523	586	79	30	ESB3-130K	80	130	155	12	2	4
80SFU21.5 3Ø	80	402	260	88	202	174	139	454	517	79	26	ESB3-130K	80	130	155	12	2	4
80SFU22.2 1Ø	80	402	260	88	202	174	139	535	598	79	34	ESB3-130K	80	130	155	12	2	4
80SFU22.2 3Ø	80	402	260	88	202	174	139	454	517	79	29	ESB3-130K	80	130	155	12	2	4

Dimensions—inch

Weight:lb

Model	d	A	B	C	D	E	F	G	H	I	WT1	Elbow (Flange)Set	DN	DB	DC	DD	(n)QTY	WT2
80SFU21.5 1Ø	3	15 ³ / ₁₆	10 ¹ / ₄	3 ³ / ₁₆	7 ¹⁵ / ₁₆	6 ⁷ / ₈	5 ¹ / ₂	20 ⁹ / ₁₆	23 ¹ / ₁₆	3 ¹ / ₈	66	ESB3-130K	3	5 ¹ / ₈	6 ¹ / ₈	1/2	2	9
80SFU21.5 3Ø	3	15 ³ / ₁₆	10 ¹ / ₄	3 ³ / ₁₆	7 ¹⁵ / ₁₆	6 ⁷ / ₈	5 ¹ / ₂	17 ⁷ / ₈	20 ³ / ₈	3 ¹ / ₈	57	ESB3-130K	3	5 ¹ / ₈	6 ¹ / ₈	1/2	2	9
80SFU22.2 1Ø	3	15 ³ / ₁₆	10 ¹ / ₄	3 ³ / ₁₆	7 ¹⁵ / ₁₆	6 ⁷ / ₈	5 ¹ / ₂	21 ¹ / ₁₆	23 ³ / ₁₆	3 ¹ / ₈	75	ESB3-130K	3	5 ¹ / ₈	6 ¹ / ₈	1/2	2	9
80SFU22.2 3Ø	3	15 ³ / ₁₆	10 ¹ / ₄	3 ³ / ₁₆	7 ¹⁵ / ₁₆	6 ⁷ / ₈	5 ¹ / ₂	17 ⁷ / ₈	20 ³ / ₈	3 ¹ / ₈	64	ESB3-130K	3	5 ¹ / ₈	6 ¹ / ₈	1/2	2	9

C.W.L.:Continuous Running Water Level
L.W.L.:Lowest Running Water Level

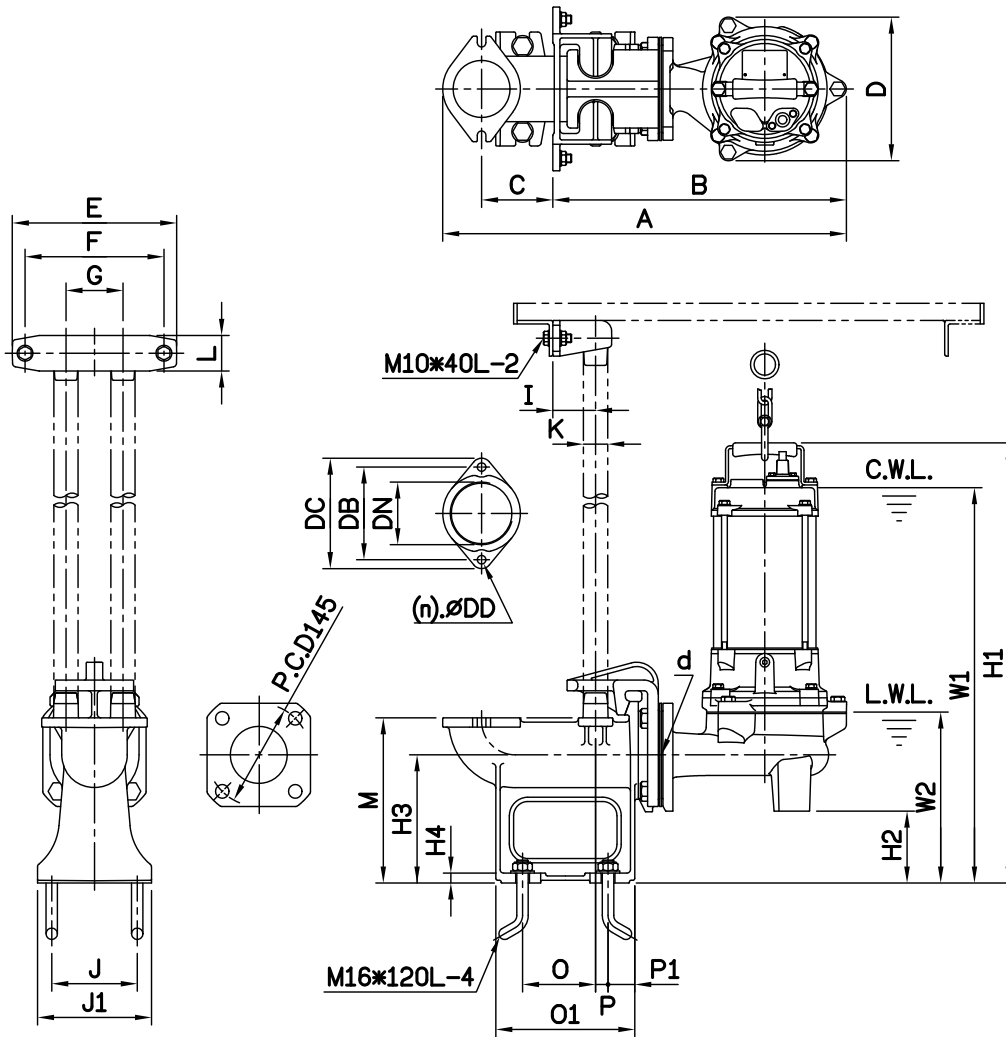
WT1:Pump Weight(Without Cable)
WT2:Elbow Set Weight

DIMENSIONS

NO: T3SFU222032-00

MODEL: 80SFU21.5 / 22.2

60Hz 1Ø / 3Ø



Flange	
Female Thread	
PF	NPT

Dimensions-mm

Elbow (Flange)Set	DN	DB	DC	DD	(n)QTY
ESF3-130	80	130	155	12	2

Dimensions-inch

Elbow (Flange)Set	DN	DB	DC	DD	(n)QTY
ESF3-130	3	5 1/8	6 1/8	1/2	2

Dimensions-mm

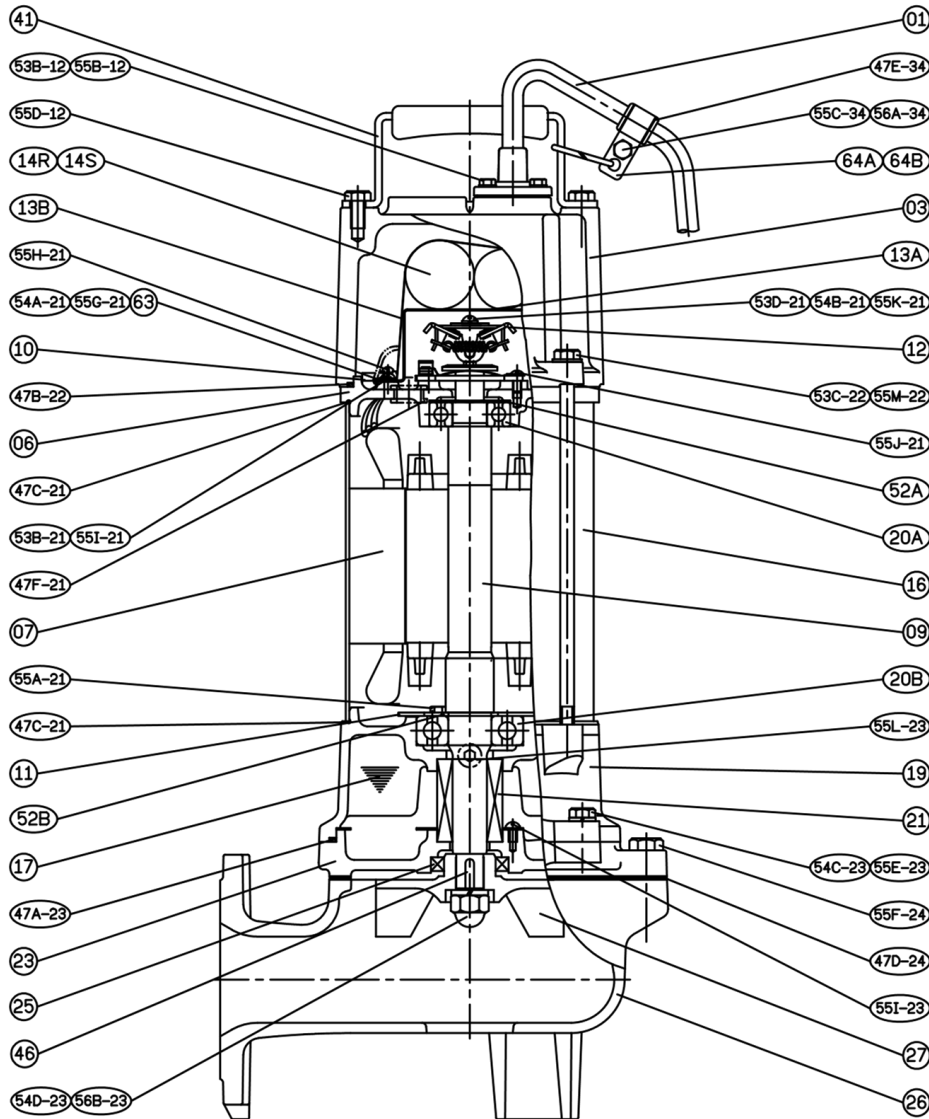
Model	d	A	B	C	D	E	F	G	I	J	J1	K	L	M	O	O1	P	P1	W1	W2	H1	H2	H3	H4	WT1	Weight:kg	
																										GRS Set	WT2
80SFU21.5 Ø1	80	567	412	100	202	230	195	80	60	120	160	1 1/4"	50	232	103	195	18	38	624	240	687	101	180	14	30	ST2-80	19
80SFU21.5 Ø3	80	567	412	100	202	230	195	80	60	120	160	1 1/4"	50	232	103	195	18	38	555	240	618	101	180	14	26	ST2-80	19
80SFU22.2 Ø1	80	567	412	100	202	230	195	80	60	120	160	1 1/4"	50	232	103	195	18	38	636	240	699	101	180	14	34	ST2-80	19
80SFU22.2 Ø3	80	567	412	100	202	230	195	80	60	120	160	1 1/4"	50	232	103	195	18	38	555	240	618	101	180	14	29	ST2-80	19

Dimensions-inch

Model	d	A	B	C	D	E	F	G	I	J	J1	K	L	M	O	O1	P	P1	W1	W2	H1	H2	H3	H4	WT1	Weight:lb	
																										GRS Set	WT2
80SFU21.5 Ø1	3	22 3/16	16 1/4	3 15/16	7 15/16	9 1/16	7 1/16	3 3/8	2 3/8	4 3/4	6 7/16	1 1/4	2	9 3/8	4 1/16	7 1/16	1 1/16	1 1/2	24 3/16	9 7/16	27 1/16	4	7 1/16	7/16	66	ST2-80	42
80SFU21.5 Ø3	3	22 3/16	16 1/4	3 15/16	7 15/16	9 1/16	7 1/16	3 3/8	2 3/8	4 3/4	6 7/16	1 1/4	2	9 3/8	4 1/16	7 1/16	1 1/16	1 1/2	21 1/8	9 7/16	24 5/16	4	7 1/16	7/16	57	ST2-80	42
80SFU22.2 Ø1	3	22 3/16	16 1/4	3 15/16	7 15/16	9 1/16	7 1/16	3 3/8	2 3/8	4 3/4	6 7/16	1 1/4	2	9 3/8	4 1/16	7 1/16	1 1/16	1 1/2	25 1/16	9 7/16	27 1/2	4	7 1/16	7/16	75	ST2-80	42
80SFU22.2 Ø3	3	22 3/16	16 1/4	3 15/16	7 15/16	9 1/16	7 1/16	3 3/8	2 3/8	4 3/4	6 7/16	1 1/4	2	9 3/8	4 1/16	7 1/16	1 1/16	1 1/2	21 1/8	9 7/16	24 3/16	4	7 1/16	7/16	64	ST2-80	42

C.W.L.:Continuous Running Water Level
L.W.L.:Lowest Running Water Level

WT1:Pump Weight(Without Cable)
WT2:GRS Set Weight



NO.	Part name	Material	QTY
01	Cable		1
03	Upper Cover	SCS14	1
06	Bracket	SCS14	1
07	Stator		1
09	Shaft End	SUS316	1
10	Auto-cut Protector		1
11	Bearing Fixer	SPCC	1
12	Centrifugal Switch		1
14R	Capacitor		1
14S	Start Capacitor		1
16	Motor Frame	SUS316	1
17	Lubricant		
19	Bearing Bracket	SCS14	1
20A	Bearing		1

NO.	Part name	Material	QTY
20B	Bearing		1
21	M. Seal	CA/CE & SiC/SiC	1
23	M. Seal Bracket	SCS14	1
25	Oil Seal	VITON	1
26	Casing	SCS14	1
27	Impeller	SCS14	1
41	Handle	SUS304	1
46	Impeller Key	SUS304	1
47	Gasket Kit		